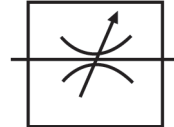


Flow Control & Needle Valves

Connections: 1/8 - 1 1/2 BSP

Inline needle valves with micrometer scale



DV series double acting flow control (bi-directional) with shut off

BSP	BAR	LPM MAX	Part Number
1/8	350	10	DV-G18
1/4	350	50	DV-G14
3/8	350	75	DV-G38
1/2	350	140	DV-G12
3/4	350	175	DV-G34
1	350	350	DV-G100
1 1/4	350	350	DV-G114
1 1/2	350	350	DV-G112

Technical Data

Materials

DV/DRV: Carbon steel, Nitrile seals

FT: Nickel plated brass (stainless steel where stated), Nitrile seals

Operating Pressure

DV/DRV: 350 BAR

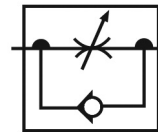
FT: 210 BAR

Operating Temperature

-20°C - to +100°C

Special Requests

For assistance, contact our technical office.



DR series single acting flow control, free reverse flow (uni-directional)

BSP	BAR	LPM MAX	Part Number
1/8	350	10	DRV-G18
1/4	350	50	DRV-G14
3/8	350	75	DRV-G38
1/2	350	140	DRV-G12
3/4	350	175	DRV-G34
1	350	350	DRV-G100
1 1/4	350	350	DRV-G114
1 1/2	350	350	DRV-G112
2	350	350	DRV-G200